

Godox 神牛



影室闪光灯
Compact Studio Flash



深圳市神牛摄影器材有限公司

GODOX Photo Equipment Co., Ltd

地址/Add: 深圳市宝安区福永镇福洲大道西新和村华发工业园A4栋
Building A4, Xinhe Huafa Industrial Zone, Fuzhou RD West, Fuyong
Town, Baoan District, Shenzhen 518103, China

电话/Tel: +86-29609320(8062)

传真/Fax: +86-755-25723423

邮箱/E-mail: godox@godox.com

705-E00000-02

Instruction Manual

说 明 手 册

Chinese English Bilingual | 中英文双语

前 言

感谢您使用E系列影室闪光灯!

此产品持久耐用，功能齐全，性能强大，专为中小型影楼和摄影工作室人像拍摄、电商产品拍摄设计，是一款高性价比的理想光源。在大型影棚中也可以作为补光工具提供高光、背景光、发型光。产品有以下亮点：

- 20级闪光强度随意选择，LED数码显示屏从1.0-3.0准确定位输出功率
- 选配FT-16功率遥控器，可远程控制闪光灯功率大小、造型灯开关、蜂鸣器使能及引闪
- 75W大功率造型灯，9级亮度自由调节
- 输出稳定，同一功率连续输出变化不超过2%
- 具备防预闪功能，带一次预闪功能的相机用光控可实现同步拍摄
- 人机工程学面板，3秒后调节参数智能记忆、开机自动恢复

目 录

01 前言	05 • 光控使用
02 警告	05 • 声音提示
02 注意事项	06 • 记忆存储功能
03 部件	06 • 无线控制功能
03 • 机身	06 • 装卸闪光灯管
03 • 附件	07 产品参数
04 • 可选购附件	07 维护保养
04 使用	
04 • 固定闪光灯	
04 • 接通电源	
04 • 造型灯使用	
05 • 功率调节	
05 • 试闪按钮	
05 • 同步触发	

警告

在使用本设备前请仔细阅读以下警告内容，并妥善保管以便所有本产品使用者可随时参阅。

- ▲ 请勿私自拆卸产品，如产品出现故障须由本公司或授权的维修人员进行检查维修。
- ▲ 请保持干燥：请勿用湿手接触产品，亦不可将产品浸入水中或暴露于雨中。
- ▲ 请勿让儿童接触本产品。
- ▲ 摄影灯适用于通风的环境，使用时请保持灯光源部分及散热孔不被堵塞，请勿在易燃易爆的环境中使用。
- ▲ 摄影灯采用电源插头做为断接装置，应保持随时便于操作。
- ▲ 使用时严禁用手接触灯光发热部件。
- ▲ 安装及连接附件时，请关闭开关断开电源，装卸闪光灯管/造型灯时，请确认灯管为冷却状态，避免烫伤，还需佩戴绝缘手套。
- ▲ 请勿将闪光灯头正对人眼闪光(特别是婴儿的眼睛)，否则可能会在短时间造成视力障碍。
- ▲ 在不使用时，请断开电源。

注意事项

- ▲ 闪光灯在全功率的情况下连续引闪30次后，需冷却3分钟左右。如果连续使用而不冷却就会产生高温积热。
- ▲ 不可长时间连续使用造型灯，否则可能造成安装在灯头上的柔光箱等易燃附件燃烧。有易燃附件时建议不要连续使用造型灯超过10分钟。如使用超过10分钟，请冷却1分钟后再继续使用。
- ▲ 使用束光筒时，请勿长时间点亮造型灯或过频闪光(全功率每分钟不多于6次)。积热会导致闪光灯外壳受损或造成灯的损坏。
- ▲ 避免突然的碰撞，防止闪光灯管或造型灯受损。

部件

机身



- | | | |
|-----------------|--------------|------------|
| 01. 电源插座 | 08. BUZZ蜂鸣按键 | 15. 光控接收器 |
| 02. 同步线插孔 | 09. TEST试闪按键 | 16. 保险丝座 |
| 03. 电源开关 | 10. 数码显示屏 | 17. 无线控制插座 |
| 04. 上调按键 | 11. 光控指示灯 | 18. 托架 |
| 05. 下调按键 | 12. 造型灯指示灯 | 19. 伞孔 |
| 06. SLAVE光控模式按键 | 13. 蜂鸣指示灯 | 20. 方向调节把手 |
| 07. MODEL造型灯按键 | 14. 试闪指示灯 | |

附件

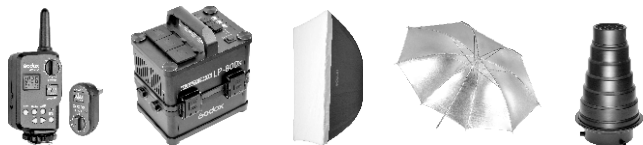
1. 电源线
2. 造型灯
3. 说明书



• 可选购附件

可搭配本公司以下摄影附件使用，以获得最佳的拍摄效果和使用体验：

FT-16功率遥控器、逆变器、柔光箱、反光伞、灯架、蜂巢、雷达罩、束光筒等。



使 用

• 固定闪光灯

将闪光灯设备安装在一个合适的灯架上，调整好托架(18)并扭紧固定，根据需要使用方向调节把手(20)来调节灯的方向。伞孔(19)可以插上各类影楼伞。



• 接通电源

通过电源线把闪光灯接通到交流电源上，拨动闪光灯上的电源开关(3)，此时数码显示屏(10)亮起，表示连接正常。

• 造型灯使用

造型灯按键(7)短按可控制造型灯的打开和关闭。当造型灯指示灯(12)点亮时，表示造型灯打开；造型灯指示灯(12)熄灭时，表示造型灯关闭。
长按造型灯按键(7)超过2秒，进入造型灯亮度调节状态。按上调按键(4)或下调按键(5)可对造型灯的亮度进行设置，亮度范围L1~L9，表示9个档位，L1最低，L9最高。

造型灯点亮2小时后会自动关闭，以防在无人状态的长时间点亮，导致高温积热产生。

造型灯点亮2小时后会自动关闭，以防在无人状态的长时间点亮，导致高温积热产生。



如有易燃附件在灯头上，不可长时间点亮造型灯，最好是点亮10分钟后冷却1分钟后再继续使用，并注意易燃附件温度。

• 功率调节

闪光功率通过上调按键(4)或下调按键(5)来控制，可以从“1.0”至“3.0”自由调节，数码显示屏(10)将对所选择功率作准确显示，满足客户在不同环境下对光源的要求。数码显示屏显示“OF”时，表示闪光引闪功能关闭。从高档调节至低档，需要按下试闪按钮来放电以获得所需的功率。

• 试闪按钮

欲使闪光灯测试闪光而不拍照，请按试闪按钮(9)。摄影师可以通过试闪按钮结合上调按键(4)或下调按键(5)来改变闪光亮度。

• 同步触发

同步线插孔(2)规格为Φ3.5mm，此处可插入同步线或者触发器触发插头对闪光灯进行同步引闪。



• 光控使用

光控模式有3种选择，由SLAVE光控模式按键(6)进行切换。

- 1) 非光控模式：光控指示灯(11)不亮，表示光控功能已关闭。
- 2) 1次引闪模式：光控指示灯(11)亮蓝色，表示闪光灯接收到1次外界闪光可以同步触发闪光。此模式下，可做副灯使用，创造多种光影效果。
- 3) 2次引闪(防预闪)模式：光控指示灯(11)亮红色，表示闪光灯在2秒内接收到2次外界闪光，接收到第2次时可以同步触发闪光。此模式下，可以做副灯使用，适用于TTL闪光环境。具有防预闪功能，使用带一次预闪功能的相机能用光控实现同步拍摄。

• 声音提示

蜂鸣按键(8)控制蜂鸣提示的打开和关闭，当蜂鸣指示灯(13)点亮时，表示蜂鸣提示音打开；当蜂鸣指示灯(13)熄灭时，表示蜂鸣提示音关闭。
每次回电充满时会响“BI—”一声，提示可以引闪。

• 记忆存储功能

闪光灯设有参数记忆功能，调节参数3秒后未变更的，闪光灯会自动存储设置好的参数。下次开机使用时初始设置跟关机前一致。

• 无线控制功能

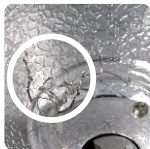
闪光灯内置无线控制插座(17)，配合特定遥控器使用，您可以实现对闪光灯的无线控制。

将神牛FT系列遥控器(需另购)的接收端插入“无线控制插座(17)”，手持功率遥控器发射端，可远程控制闪光灯的功率开关和大小、造型灯开关、蜂鸣器开关、闪光灯触发等。您也可以将发射端置于相机热靴上，通过相机快门来进行同步引闪。更多遥控器的使用方法，请查阅FT系列遥控器的说明书。



• 装卸闪光灯管

关闭所有电源并拔出电源线，带上绝缘手套，将闪光灯管上的铁丝拧松，用平衡力拿住灯管两脚间，轻轻往外拉出卸下旧灯管。将旧灯管两脚上的套管取下套到新灯管两脚，拿住新灯管两脚间，对准灯头上两铜柱，用平衡力往里推进。最后将铁丝绕灯管弹片并拧紧固定好灯管。



产品参数

型号	E120	E160	E250	E300
闪光能量	120Ws	160Ws	250Ws	300Ws
闪光指数(m ISO 100)	38	43	53	58
色温	5600±200K			
电源电压	AC110V-120V-60Hz或AC220V-240V-50Hz			
闪光功率调控	1.0~3.0 (1/8~1/1)			
造型灯功率	75W			
造型灯档位	9级(L1~L9)			
回电时间	0.3~2秒		0.4~2.5秒	
闪光触发控制方式	同步线插孔，光控感应，试闪按钮，无线控制插座			
闪光持续时间	1/2000-1/800s			
保险丝	5A			
尺寸	灯体直径Φ11.8m，含把手高20cm，含造型灯长20.3cm			
净重	约1.14kg	约1.15kg	约1.19kg	约1.31kg

维护保养

- 闪光灯在工作时，如发现异常，应立即关掉电源，查明原因。
- 灯体应避免震动，平时注意表面除尘。
- 灯体稍有发热为正常现象，无特别需要时，勿连续引闪。
- 除灯管与造型灯消耗品允许用户用原厂配置的自行装卸更换外，闪光灯的其他维护概由本厂指定可供原厂配件之维修部负责。
- 1年保修，由于灯管与造型灯为消耗品，不在1年保修范围。
- 擅自检修此闪光灯，经发现将取消闪光灯之一年保修期，维修需要收取相关费用。
- 如果本品出现故障或者被水淋湿，唯有在专业人员维修后方可继续使用。
- 在维修和清洁本品时请断开电源。
- 如有技术更改，恕不另行通知。



Compact Studio Flash



Instruction Manual | English

FOREWORD

Thanks for choosing E series studio flash.

It is a lightweight, compact and durable flash with complete functions. Design for shooting studio portrait and e-commerce product. This product is suitable for head shot, waist shoot, and certificate photography, as well as product shooting, etc. It can also offer high light, background light, or hair light in large studios and workshops. The E series flash offers:

- Precise output displayed on LED panel, 20 steps from 1.0 to 3.0 in 0.1 increments
- Use optional FT-16 trigger to control the flash power ratio, modeling lamp and buzzer, as well as flash triggering
- 75W modeling lamp adjusts in 9 power levels
- Outstanding output stability, no more than 2% shifts when under the same output
- Anti-preflash function enables synchronization with cameras that have a one-preflash firing system
- Auto memory and recovery of adjusted panel settings

CONTENTS

09	Foreword	13	• Power Output Control
10	Warning	13	• Test Button
10	Caution	13	• Sync Triggering
11	Names of Parts	13	• Slave Trigger Model
11	• Body	14	• Buzz Function
12	• Accessories	14	• Memory Function
12	• Separately Sold Accessories	14	• Wireless Control Function
12	Operations	14	• Tube Replacement
12	• Flash Preparation	15	Technical Data
12	• Power Connection	15	Maintenance
13	• Modeling Lamp		

⚠ Warning

To prevent damage to the product or injury to you or to others, read the following warnings in their entirety before using this product. Keep these Warning where users can read them for ready reference.

- ▲ Do not disassemble or modify. Should the product break down, send the defective back to the authorized service center for inspection and maintenance.
- ▲ Keep dry. Do not handle with wet hands, immerse in water, or expose to rain.
- ▲ Keep out of reach of children.
- ▲ Please put the device in a ventilation environment and keep the parts of lighting and heat dissipation holes are unobstructed. Do not use in flammable environment.
- ▲ As this product adopts make and break device, please keep it easy to be used.
- ▲ No touching the heating parts of this product.
- ▲ Please turn off the power and wear insulated gloves before installing and connecting accessories. When replacing the tube or modeling lamp, please make sure that the tube is cool and wear insulated gloves to prevent burns.
- ▲ Do not flash directly towards naked eyes (especially those of babies), otherwise it may lead to visual impairment.
- ▲ Disconnect from the power supply when it will not be used for an extended period.

CAUTION

- ▲ After 30 continuous flashes at full power, the flash should be cooled down for about 3 minutes. Overheating will occur if it is used continuously without cooling down.
- ▲ Do not keep using the modeling lamp for a long time; otherwise flammable accessories attaching to flash head, e.g. softbox will get burnt. A 10-minute time is recommended in this case. After 10 minutes, cool it down for 1 minute.
- ▲ When using a snoot, do not keep the modeling lamp on for a long time or fire too frequently (not over six times for one minute). Overheating will result in damages for strobe housing and/or studio light.
- ▲ Avoid sudden impacts as this can damage the flash tube and/or modeling lamp.

NAMES OF PARTS

• Body



- | | | |
|--------------------------|-----------------------------|---------------------------|
| 01. AC Power Socket | 08. BUZZ Button | 16. Fuse |
| 02. Sync Cord Jack | 09. Test Button | 17. Wireless Control Port |
| 03. Power Switch | 10. Digital Display | 18. Mounting Bracket |
| 04. Up Button | 11. Light Trigger Indicator | 19. Umbrella Input |
| 05. Down Button | 12. Modeling Lamp Indicator | 20. Direction Adjusting |
| 06. Slave Model Button | 13. Buzz Indicator | Handle |
| 07. Modeling Lamp Output | 14. Test Indicator Lamp | |
| Controller | 15. Light Sensor | |

• Accessories

1. Power Cord
2. Modeling Lamp
3. Instruction Manual



• Separately sold accessories

The product can be used in combination with the following accessories sold separately, so as to achieve best photography effects:

FT-16 Remote Control, Power Inverter, Softbox, Photographic Umbrella, Light Stand, Barndoor, Snoot, etc.



OPERATIONS

• Flash Preparation

Attach the flash unit on an appropriate light stand. Adjust the Mounting Bracket (18) for a good angle and make sure it's tightened and fixed. Use the Direction Adjusting Handle (20) to adjust the flash to a desired direction.

Umbrella Input (19) is for different photo umbrellas to put in.



• Power Connection

Use the power cord to connect the flash to an AC power source and turn on the Power Switch (3). The Digital Display (10) lights up, indicating it's connected.

• Modeling Lamp

Each press on the Modeling Lamp Button (7) will turn the modeling lamp on or off. When the Modeling Lamp Indicator (12) lights up, the lamp is on; if not, the lamp is off.

Press the Modeling Lamp Button (7) and hold for at least 2 seconds to enter the brightness adjusting mode. In this mode, use the Up Button (4) and Down Button (5) to change the output. The modeling lamp can be adjusted in 9 levels (from the lowest L1 to the highest L9).

The modeling lamp will be off automatically after lighting for 2 hours, avoiding overheat due to long-time lighting when the user is not nearby.



When there is flammable accessory on the flash unit, do not keep the modeling lamp on for a long time. It is recommended to cool it down for one minute after 10 minutes' working.

• Power Output Control

Use the Up Button (4) and Down Button (5) to adjust the power level, so as to satisfy light requirements in different environment. The power is adjustable freely from 1.0 to 3.0 which will be accordingly shown on the Digital Display (10). "OF" on the display indicates that the flash triggering function is turned off. Pressing Test Button to discharge power is required after adjusting power from high to low.

• Test Button

To fire the flash without taking a picture, press the Test Button (9). It can also help adjust the flash brightness when combined with the Up Button (4) and Down Button (5).

• Sync Triggering

The Sync Cord Jack (2) is a $\Phi 3.50\text{mm}$ plug. Insert a trigger plug here and the flash will be fired synchronously with the camera shutter.



• Slave Trigger Model

Three slave triggering models are available and can be set by pressing Slave Model Button (6).

- 1) No optical control: The Slave Triggering Indicator (11) is off, indicating the slave triggering function is shut down.
- 2) One fire model: The Slave Triggering Indicator (11) glows blue, indicating the flash will fire synchronously when the master flash fires. In this model, the flash can function as a slave flash, offering various effects of light and shadow.
- 3) Anti-preflash model: The Slave Triggering Indicator (11) glows red, indicating the flash will ignore a single "preflash" from the master flash and will only fire in response to the second, actual flash from the master. In this model, the flash can function as a slave flash. It is applicable when using a TTL master flash. With this anti-preflash function, synchronization is

supported with cameras having a one-preflash firing system.

• Buzz Function

The Buzz Button (8) is used to decide whether there is sound reminder for ready flash after recharging. When the Buzz Indicator (12) is on, it means buzz function is working; if it is off, the buzz function is shut down. A "BI" sound will be heard when it's fully charged.

• Memory Function

The device is equipped with memory function for the panel setting. It will help remember the panel setting 3 seconds after you set it. When starting up the flash next time, the panel setting will be the same as that before powering it off.

• Wireless Control Function

The flash unit is built in with a Wireless Control Port (17) so that you can wirelessly control the on-and-off of your flash, modeling lamp and buzzer, as well as adjust the flash output level, etc.

To control the flash wirelessly, you need a FT series remote control set (on-camera and on-flash), which is sold separately. Insert its receive end into the Wireless Control Port (17) on the flash and insert the transmit end into the camera hot shoe. Settings made on the hotshoe-mounted transmit and receive ends will be wirelessly communicated to the flash. Then you can press the camera shutter-release button to trigger the flash. You can also hold the transmit end at hand to control your flash.



For full instructions on the use of FT series remote control, see its user manual.

• Tube Replacement

Shut down the power and remove the power cord before replacing the flash tube and wear insulated gloves. Then, loosen the iron wire on the tube, keep a balanced hold on the two feet of the flash tube and pull out the old tube gently. Take down the feet casing from the old tube and put it on the new one. Hold two feet of the new tube, and target directly towards the two copper outlets, then push them slightly in. Twine the iron wire on the stainless steel sheet to fix the flash tube.



TECHNICAL DATA

Model	E120	E160	E250	E300
Max Power (WS)	120Ws	160Ws	250Ws	300Ws
Guide Number (m ISO 100)	38	43	53	58
Color Temperature	5600±200K			
Operating Voltage	AC110V-120V-60Hz or AC220V-240V-50Hz			
Power Output Control	OFF, 1.0~3.0 (1/8-1/1)			
Modeling Lamp (W)	75W			
Modeling Lamp Level	9 Levels (L1 to L9)			
Recycle Time	0.3~2s		0.4~2.5s	
Triggering Method	Sync cord, Test button, Slave triggering, Wireless control port			
Flash Duration	1/2000 to 1/800s			
Fuse	5A			
Dimension	Flash diameter Φ11.8cm, height of flash with handle 20cm, length of flash with modeling lamp 20.3cm			
Net Weight	Approx. 1.14kg	Approx. 1.15kg	Approx. 1.19kg	Approx. 1.31kg

MAINTENANCE

- Shut down the device immediately when it works abnormally and find out the reason.
- Avoid sudden impacts and the lamp should be dedusted regularly.
- It is normal for the lamp to be warm when in use. Avoid continuous flashes if unnecessary.
- Maintenance of the flash must be performed by our authorized maintenance department which can provide original accessories. The flash-tube and the modeling lamp are user-replaceable. Replacement tubes and lamps can be obtained from the manufacturer.
- This product, except consumables e.g. flash tube and modeling lamp, is supported with a one-year warranty.
- Unauthorized service will void the warranty.
- If the product had failures or was wetted, do not use it until it is repaired by professionals.
- Disconnect the power when cleaning the flash or when changing the flash tube / modeling lamp.
- Changes made to the specifications or designs may not be reflected in this manual.